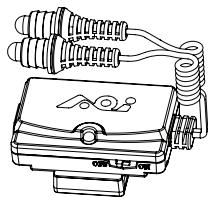




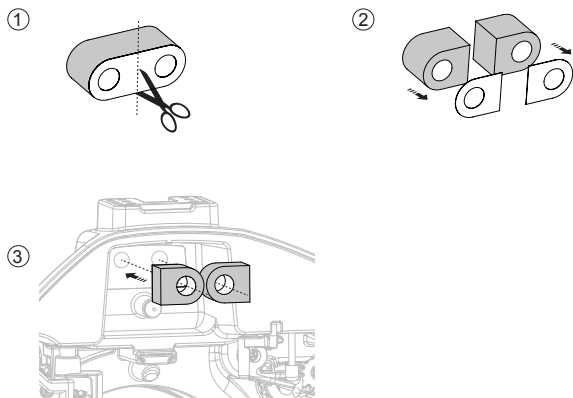
AOI STR-05 LED STROBE TRIGGER GENERAL GUIDE



Thank you for your purchase of an AOI product. Please read this general guide prior to using it. It will provide an overview of how this product can be used for optimal performance. For additional information, please consult your local dealer or write to info@aoi-uw.com

- 1 -

Installing for Sponge Tubes LED Socket In The Housing



- 4 -

INSTRUCTIONS FOR USE

1. Charging the STR-05 LED Strobe Trigger main unit:

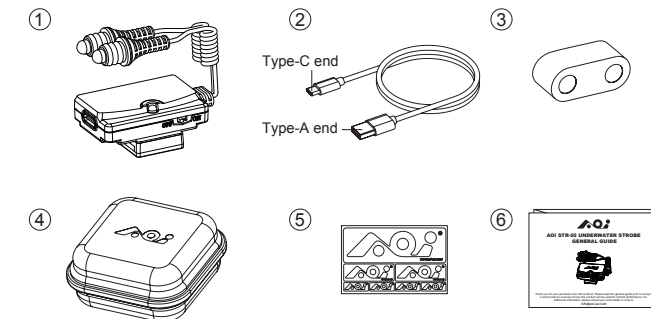
- Connect the Type-C end of the USB charging cable to the main unit's Type-C port featured on the side of the unit.
- Connect the Type-A end of the USB charging cable to Type-A port of DC 5V USB charger.
- The unit should start charging and the indicator light should start flashing green (once/sec).
- When charging is complete, the indicator light stops flashing and remains green.

2. STR-05 LED Strobe Trigger Installation

- Install the LED Strobe Trigger main unit on the camera by gently sliding the hot-shoe connector featured at the bottom of the main unit all the way through the hot-shoe mount featured on top of the camera. Note that if a protective cover is installed on the camera hot-shoe mount, it should be removed prior

- 7 -

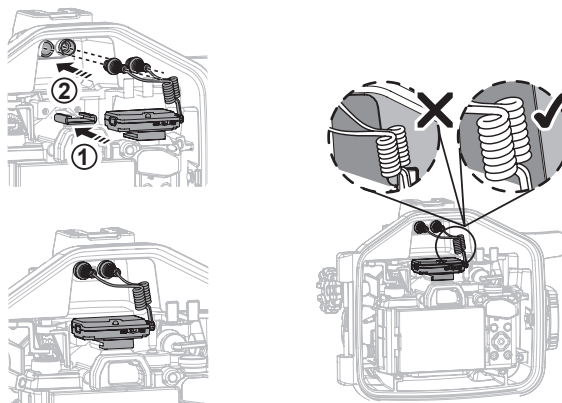
Items Included in the package



- LED Strobe Trigger main unit
- USB Charging Cable
- Spongy LED trigger ports x4pcs
- EVA Carry Case
- AOI Logo Sticker
- General Guide

- 2 -

Installing LED Optical Strobe Trigger In The Housing



- 5 -

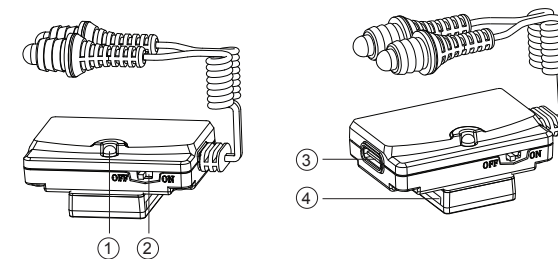
to installing the main unit of the LED Strobe Trigger.

b. Test the LED Strobe Trigger:

- Turn the LED Strobe Trigger on by sliding the power switch featured on the main unit to the "ON" position. The indicator light should start flashing green once in 2 seconds (if fully charged).
- For using with Olympus Camera, you can check if the Hot Shoe Connector is connected properly. Turn the camera on and go to the RC menu on the camera. If the connection is good, the RC Menu text will show solid white. Otherwise, all text will show gray and can't be activated.
- Test the LED Strobe Trigger with the strobe. If the strobe and camera have RC function, set the strobe and camera to RC operation mode. Otherwise, set the strobe and camera to "Manual" operation mode. Place the strobe in front of the camera so it faces the camera lens. Place one of the LEDs featured at the end of the LED cable in front of the strobe slave sensor. Capture an image by fully depressing the camera shutter release. The light

- 8 -

Names of the Parts



- Indicator light
- Power switch
- Type-C port
- Hot-shoe connector

- 3 -

The **STR-05 LED Strobe Trigger** triggers underwater strobes and flashes to fire in sync with the camera using fiber optic cables. Using the LED Strobe Trigger eliminates the need for the camera built-in flash to fire, thereby extending camera battery life and allowing for longer shooting sessions. Eliminating the camera built-in flash also keeps the camera from heating up, resulting with less condensation in humid conditions. The LED Strobe Trigger's super quick recycle time allows for rapid shooting and triggering of the strobes without having to wait for the camera built-in flash to charge.

COMPATIBILITY

The **STR-05 LED Strobe Trigger** can be connected to any camera featuring a hot-shoe connection. It was designed to be installed inside housings featuring sufficient space above the camera hot-shoe.

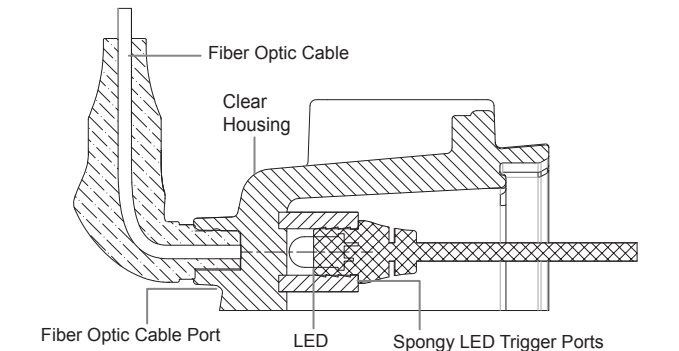
The **STR-05 LED Strobe Trigger** is capable of triggering most underwater strobes available in the market. Note that when using the LED Strobe Trigger with Olympus camera and the camera's RC function turning on, strobe output is controlled by RC mode, otherwise strobe output is controlled manually.

- 6 -

emitted by the LED should trigger the strobe to fire in sync with the camera, resulting with an image with the output of the strobe is visible. If the strobe isn't triggered by the LED, refer to section 4 – Troubleshooting".

- If your housing features built-in LED trigger ports, proceed to step d below. If your housing doesn't feature dedicated LED trigger ports, the spongy LED trigger ports included in the package should be installed inside the housing:
 - Peel the protective film off the sticker side of the spongy LED trigger ports and stick them inside the clear housing, against the fiber optic cable ports facing the camera built-in flash. Make sure that the center of the spongy LED trigger ports is positioned exactly opposite to the center of the fiber optic cable ports to allow for the light emitted by the LEDs to be transmitted through the fiber optic cables.

- 9 -



- 10 -

- f. Capturing images by fully depressing the housing shutter release control will flash both LEDs featured at the end of the LED cable inside the housing. The light emitted by the LEDs is transmitted to the slave sensor of the strobes through the fiber optic cables, thus triggering them to fire in sync with the camera. In case of failure to trigger the strobes to fire in sync with the camera, please refer to section 4 - "Troubleshooting".
- g. For camera which is not Olympus models, the external flash setting should be turned on with forced flash.
- h. During the dive, preventing the strobes from firing can be carried out by either turning the strobes off or disconnecting the fiber optic cables from the strobes or camera housing.
- i. Turn the LED Strobe Trigger off when not in use by sliding the power switch featured on the main unit to the "OFF" position.
- j. For using with Olympus camera, the standby mode of LED Strobe Trigger follows the camera. If camera is in standby state, LED Strobe Trigger automatically enters standby mode. If the camera resumes working by

- 13 -

- g. The strobe slave sensor is operative and intact. This can be verified by attempting to trigger the strobe by the camera flash. Turn the strobe on and set it to "Manual" operation mode. Turn the camera on and set the camera flash to "forced flash". Position the camera flash in front of the strobe slave sensor and capture an image. If the strobe isn't triggered by the camera flash, contact the strobe manufacturer for support.

CARE & MAINTENANCE

1. Please use the utmost care and do not use excessive force when assembling and disassembling the different accessories, in order not cause any damage to the products.
2. Keep the **STR-05 LED Strobe Trigger** away from water. After the dive and prior to opening the housing, make sure to dry it well in order to prevent water from dripping on the LED Strobe Trigger once the housing has been opened.

- 16 -

- ii. If your housing features a transparent window against the camera built-in flash instead of fiber optic cable ports, it is best to attach the fiber optic cables to the transparent window prior to installing the spongy LED trigger ports in order to allow for perfect alignment of the spongy LED trigger ports with the fiber optic cables.
- d. Attach the LED cable to the housing LED trigger ports (spongy or built-in) by inserting the LED's featured at the end of the cable into the housing LED trigger ports and gently pushing them all the way in.
- e. Install the camera inside the housing as described in the housing instruction manual. Make sure that the LED cable doesn't interfere with proper camera installation by moving it away from the camera slot.
- f. When closing and locking the housing, make sure that no cables get caught in the way, as this might interfere with a proper housing seal. Upon closing the housing and prior to diving with it, submerge it in a shallow tub of water or rinse tank. Carefully look at the housing to make sure no bubbles are escaping from it, no water is entering and the moisture alarm (if installed inside the housing) doesn't beep.

- 11 -

operating it, LED Strobe Trigger will also be back on. For other camera models, if the LED Strobe Trigger isn't operated for a period of 10 minutes, it will automatically enter standby mode and the indicator light will turn off. The LED Strobe Trigger can be turned back on by capturing an image with the camera (external flash being enabled) or by sliding the power switch to "OFF" and then back to "ON" again.

k. To prevent the strobe from overheating as a result of being frequently triggered, please refer to the strobe instruction manual for guidelines and precautions.

4. Troubleshooting

In case of failure to trigger the strobes to fire in sync with the camera using the LED Strobe Trigger, please make sure that:

- a. All components of the LED Strobe Trigger have been properly installed, as described in section 2 - "STR-05 LED Strobe Trigger Installation".
- b. The main unit of the LED Strobe Trigger has been properly charged.

- 14 -

3. Keep the **STR-05 LED Strobe Trigger** away from extreme high temperatures, as under direct sunlight, since it might damage the product.
4. Do not clean the **STR-05 LED Strobe Trigger** with any chemical solvents or other materials, which might cause damage to the product.
5. When storing the **STR-05 LED Strobe Trigger** and during transportation, make sure that it is properly protected in order to prevent any damage to the product.
6. Do not store the **STR-05 LED Strobe Trigger** in presence of chemicals, solvents or fuels.
7. To prolong battery life of the **STR-05 LED Strobe Trigger**, it is important to fully charge the main unit prior to long periods of storage. Recharge the main unit every 3-6 months during storage in order to avoid battery over-drain.

- 17 -

3. STR-05 LED Strobe Trigger Operation

- a. Setup the entire underwater camera system, including camera, housing, LED Strobe Trigger, strobes and fiber optic cables installation.
- b. Note that the strobes and camera should be set both to RC operation mode or both to manual operation mode.
- c. Turn the LED Strobe Trigger on by sliding the power switch featured on the main unit to the "ON" position. The indicator light should start flashing once in 2 seconds.
- d. The color of the flashing indicator light indicates battery charge level:
 - i. Green (100%-50% power)
 - ii. Yellow (50-25% power)
 - iii. Red (25-1% power)
- e. Close the housing as described in the housing instruction manual. When closing and locking the housing, make sure that no cables get caught in the way, as this might interfere with a proper housing seal. Refer to section 2, step g for shallow water testing of the housing seal prior to the dive.

-12 -

- c. The spongy LED trigger ports (if installed) are perfectly aligned with the fiber optic cable ports and the windows behind the fiber optic cable ports are clean. This can be tested similarly to as described in section 2, step b.
- d. The fiber optic cables made use of are of high quality and sensitive enough to transmit the light emitted by the LEDs. Note that with some strobes, multi-core fiber optic cables are required for sufficient light transmission. This can be tested by removing the fiber optic cable from the strobe slave sensor and instead, placing one of the LEDs featured at the end of the LED cable in front of the slave sensor. If the strobe is now triggered by the LED when capturing an image with the camera, the fiber optic cable should most likely be replaced with a more sensitive one.
- e. Camera shutter speed is sufficiently low for triggering the strobe (usually 1/160 or lower) in non RC operating mode.
- f. The strobe is fully charged and set to "Manual" operation mode for non RC operating mode.

-15 -

Specifications

Model Number	STR-05
Description	LED Strobe Trigger
Compatible Camera Models	Olympus Camera (Support RC Mode – TTL AUTO, MANUAL, FP TTL AUTO, FP MANUAL) Other Camera (Manual Flash Mode only)
LED Type	High Power Infrared LED
LED Cables	2
Power Consumption	40 mW
Battery Power	Built-in Rechargeable Lithium Polymer Battery (3.7V 110mAh)
Battery Charging	By USB Charger DC5V, 0.5A (not included) Approx. 1.5 hours for a full charge
Battery Operation Time	Approx. 3 Days (Based on 4 Dives/Day and 1 Hour/Dive)
Auto Standby Time	Use With Olympus Camera : follows camera's standby state
	Use With Other Camera : 10 minutes
Dimensions	41 x 28 x 18 mm / 1.6 x 1.1 x 0.7 inch
Weight	13.1 g / 0.46 oz

6E010540-00001

-18 -