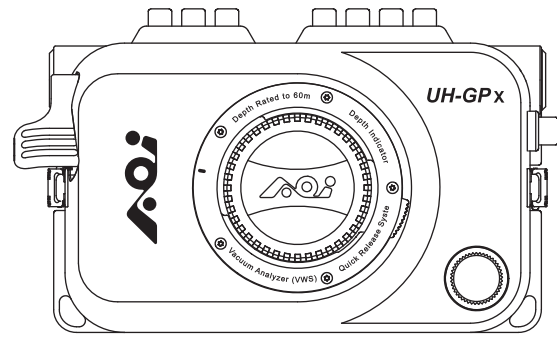


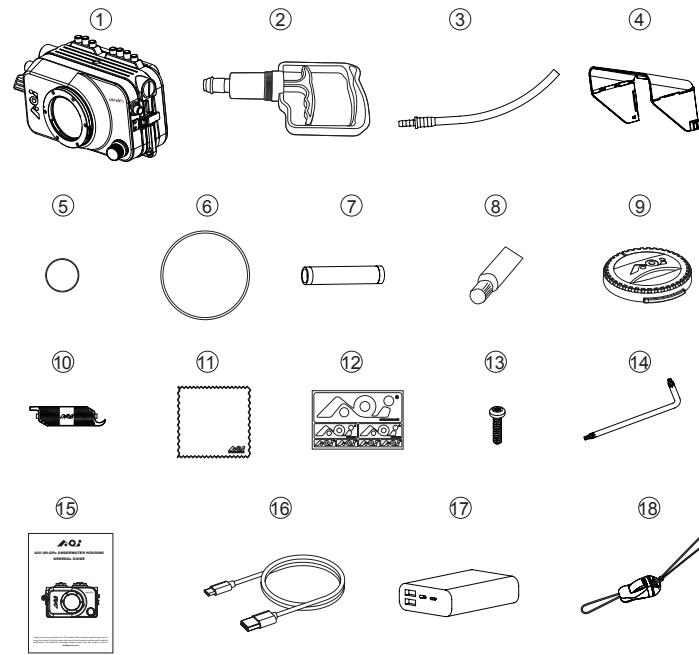


AOI UH-GPx / GPxs UNDERWATER HOUSING GENERAL GUIDE



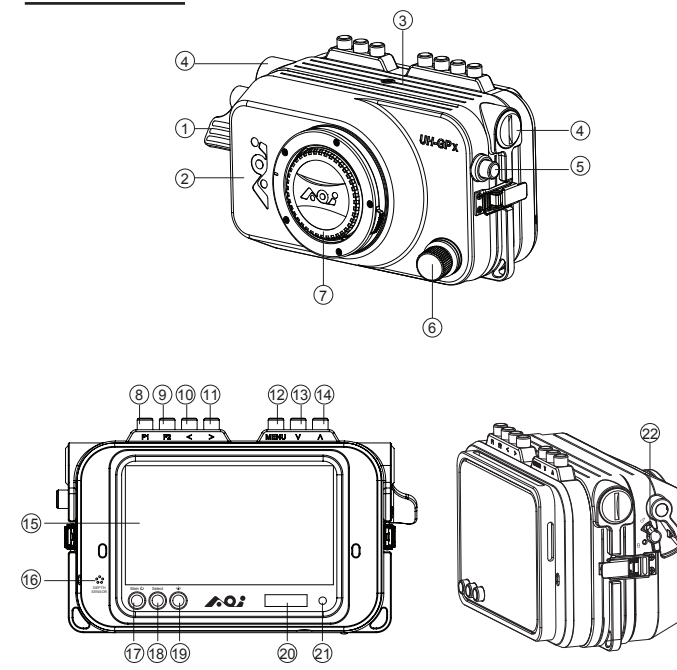
Thank you for your purchase of an AOI product. Please read this general guide prior to using the housing. It will provide an overview of how this product can be used for optimal performance. For additional information, please consult your local dealer or write to info@aoi-uw.com

Items Included in the Package



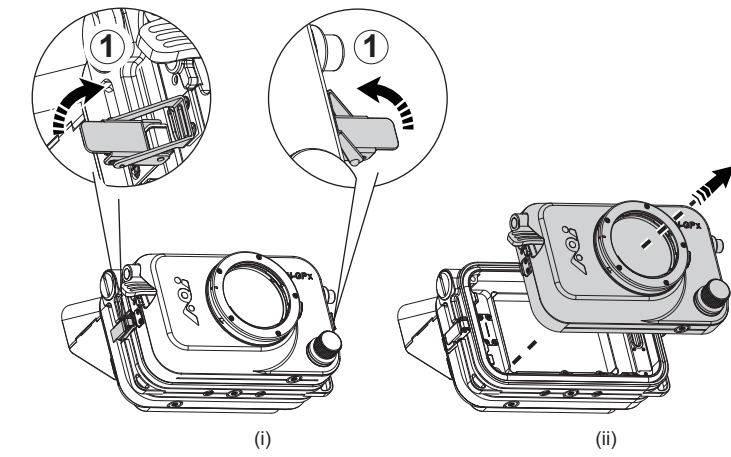
- ① AOI UH-GPx Housing
- ② Vacuum Pump (AOI VP-02)
- ③ Vacuum Pump Extension Hose
- ④ Camera Display Shade (AOI LCDH-02)
- ⑤ Spare O-Ring for Vacuum Valve Protection Cap x 1pc.
- ⑥ Spare Main Seal O-Ring x 1pc.
- ⑦ Moisture Muncher Capsules™ x 1pc.
- ⑧ Silicone Grease (AOI SIGR-5)
- ⑨ Lens Port Front Cap
- ⑩ O-ring Remover (AOI ORR-02)
- ⑪ Micro-Fiber Cleaning Cloth (AOI MC-01)
- ⑫ AOI Logo Sticker
- ⑬ Torx Screws x 2pc.
- ⑭ Wrench x 1pc.
- ⑮ General Guide
- ⑯ USB Type-C Charging Cable
- ⑰ Power Bank
- ⑱ Lanyard x 1pc.

Parts Name

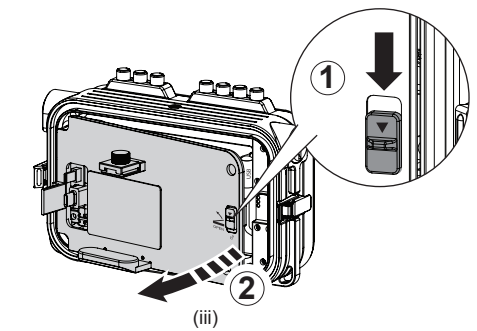


- ① Shutter Release Lever for Camera
- ② Front Cover
- ③ Housing Body
- ④ Handle Extension Port Cap
- ⑤ \odot /Mode Button for Camera
- ⑥ Vacuum Valve
- ⑦ Lens Port Front Cap
- ⑧ F1 Button
- ⑨ F2 Button
- ⑩ < Left Button
- ⑪ > Right Button
- ⑫ MENU Button
- ⑬ ∇ Down Button
- ⑭ \wedge Up Button
- ⑮ Camera Display
- ⑯ Depth Sensor
- ⑰ Main \odot Main Power Button
- ⑱ Select Button
- ⑲ \star Brightness Control Button
- ⑳ Status Display
- ㉑ Power / Alert Indicator
- ㉒ Security Lock for Shutter Release Lever

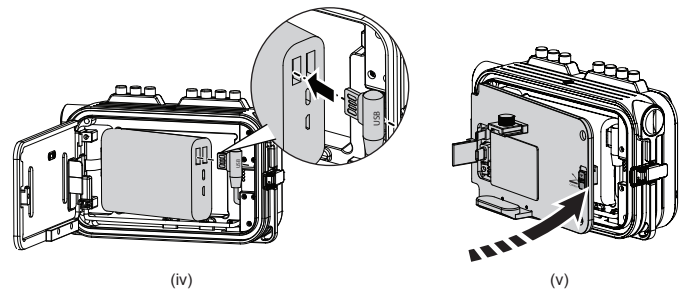
Opening UH-GPx Front Cover



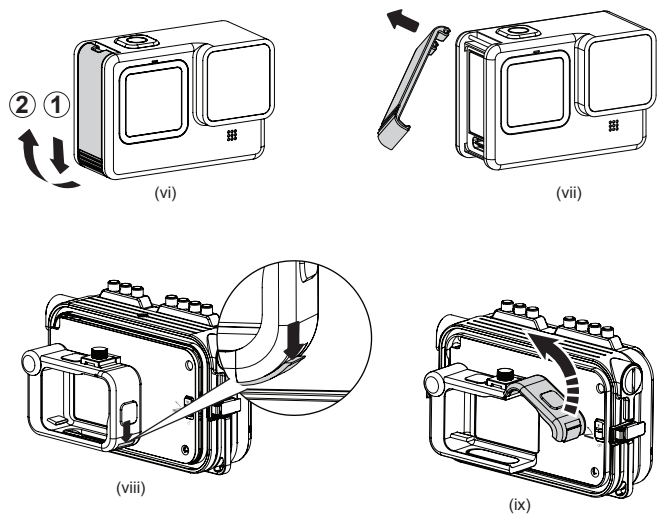
Installing Power Bak



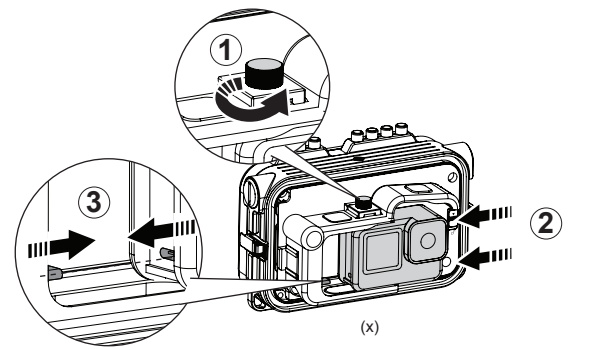
Video of Installing Power Bak



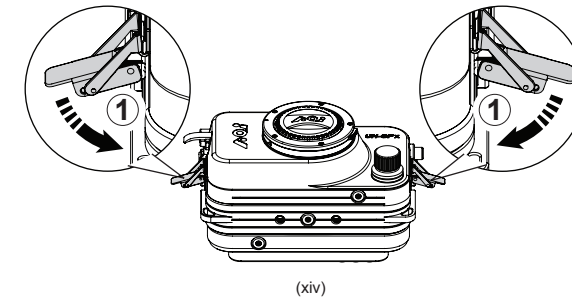
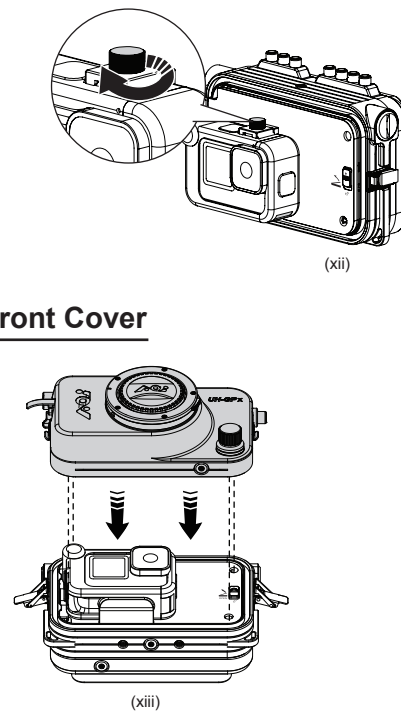
Installing GoPro Camera to Media Mod



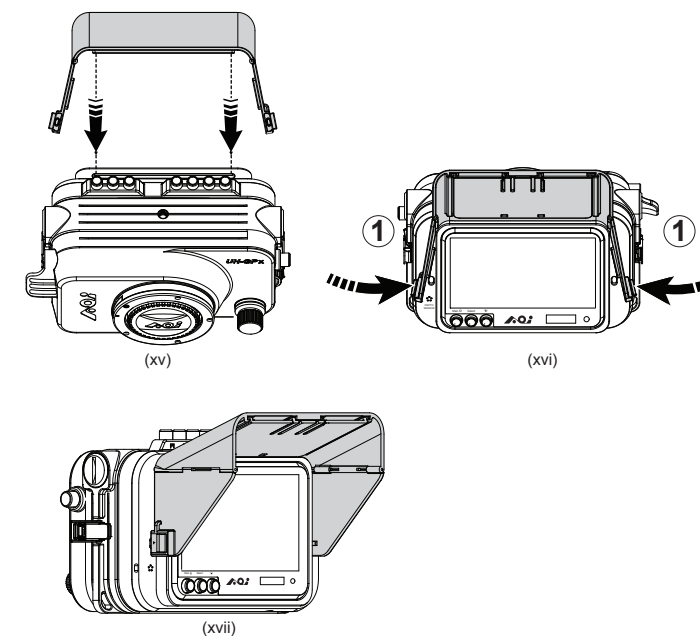
Video of Installing GoPro Camera to Media Mod



Closing UH-GPx Front Cover



Installing Camera Display Shade



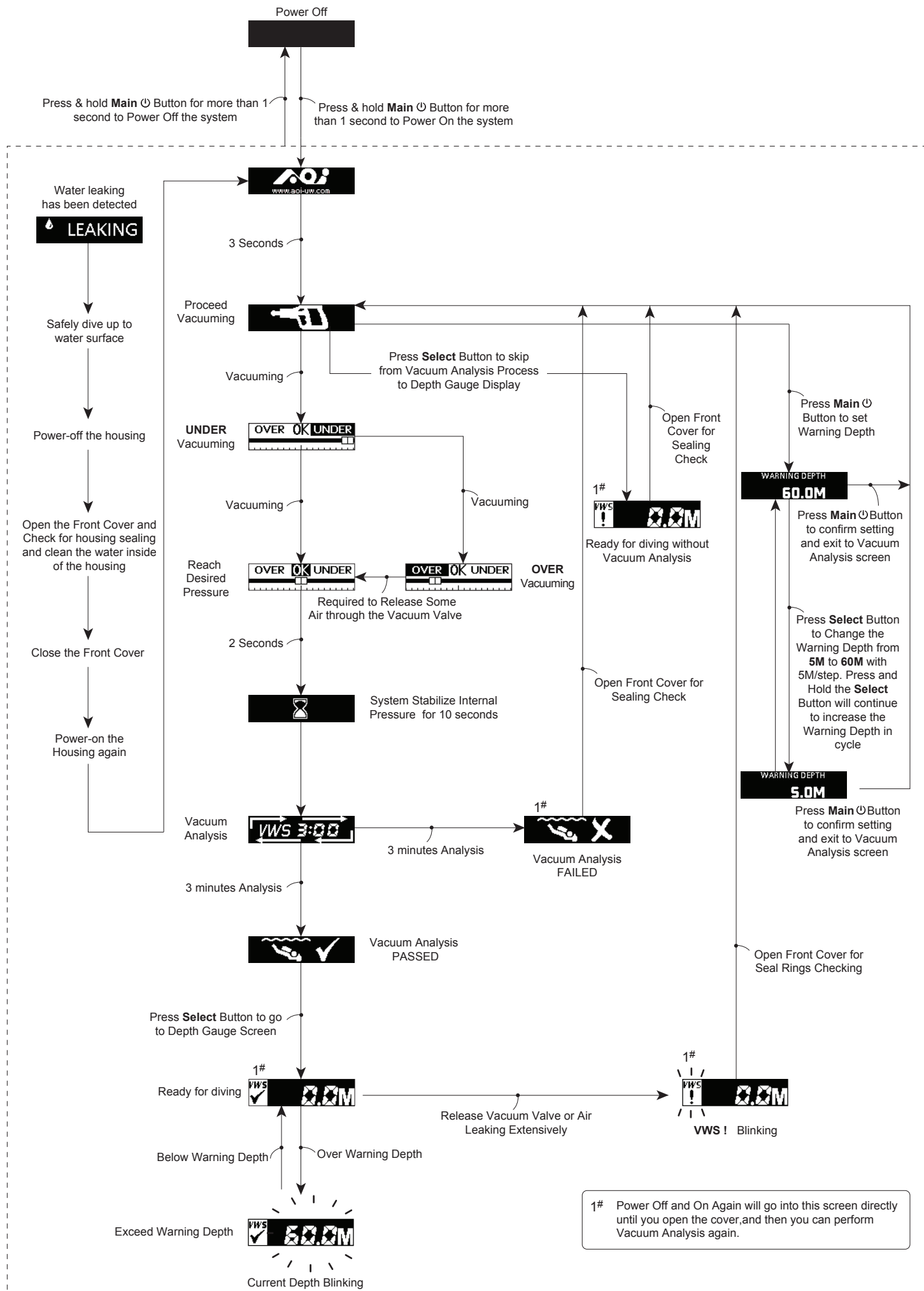
How to maintain the housing

- a. Rinse the housing exterior thoroughly with running fresh water after every use. Depress buttons and rotate knobs/dials repeatedly in fresh water to eliminate trapped salt water or debris. Dry the housing and Lens Port with a soft, clean cloth to avoid water spotting and damage.
- b. To clean the Lens Port Glass, use a mild soap solution or lens cleaner. Do not rinse the inside of port glass. Do not use alcohol or window cleaner on the Lens Port Glass.
- c. In order to better inspect, position, clean or lubricate the Housing Main Seal O-ring, carefully remove the required O-ring by using the provided AOI O-Ring Remover.
- d. Clean the Main Seal O-ring and its O-ring groove by using a microfiber cloth only. Use AOI O-Ring Remover to clean the O-Ring groove. Do not use cleaning substances other than fresh water. Remove sand, dirt, hair or fibers that can prevent a proper housing seal.
- e. To lubricate O-rings, apply a small amount of silicone grease (AOI SIGR-5) on your fingertips, gently pull the O-ring through the fingertips. This will lightly coat the entire O-ring with silicone grease. Only use the AOI Silicone Grease supplied or those approved by AOI. Using other brands of silicone grease may damage the O-ring. Do not over stretch the O-ring.
- f. Do not leave the camera and housing in direct sunlight for prolonged periods. Heat may damage the camera and housing.
- g. Dry well and remove the camera prior to travel and storage.
- h. Store the housing in a cool and dry place.

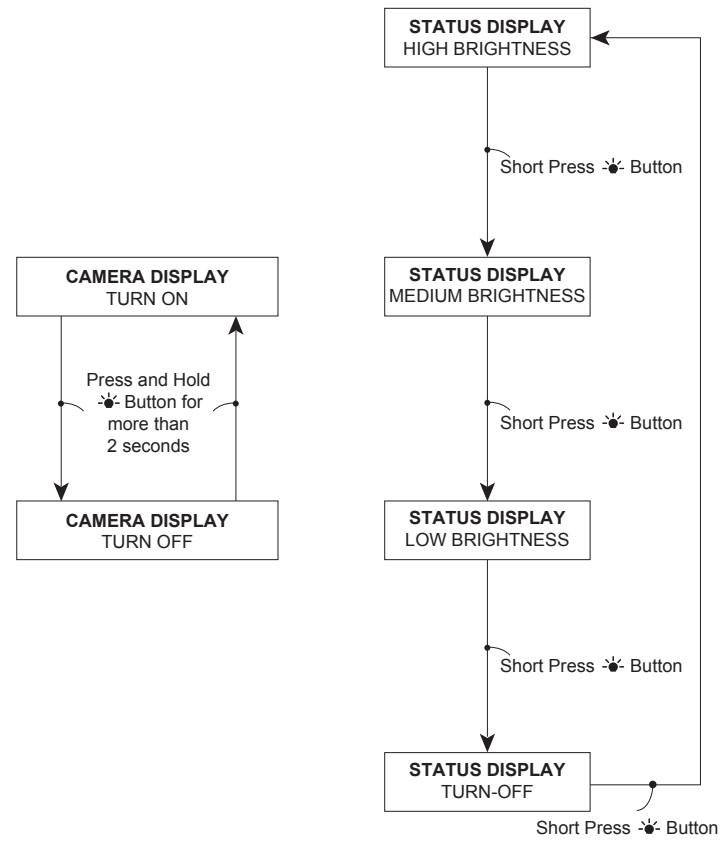
IMPORTANT:

- a. Wipe the housing dry and keep water away prior to opening the housing. Do not allow water to be in contact with the interior of the housing. This will cause irreparable damage to the Vacuum Analyzation and Wet Detection System (VWS) and other electronic/electrical components!
- b. When not using the housing, remove the Power Bank.
- c. Do Not flush the holes of the Depth Sensor with High-Pressure water.

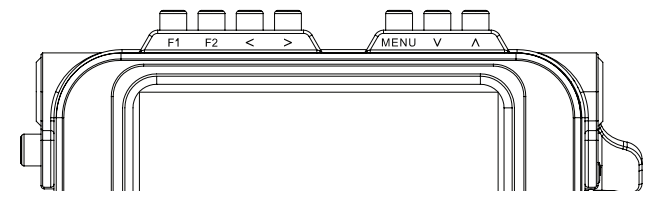
Status Display Operation Flow Chart



Status Display Brightness Control & Camera Display On/Off



Setting up Camera Display



Button	Function when menu is not displayed	Function when menu is displayed
F1	F1 Custom button	/
F2	F2 Custom button	/
^ Up	/	Select previous menu item
V Down	/	Select next menu item
MENU	Display Main menu	Exit current menu
< Left	Decrease the brightness of the Backlight	Decrease or adjust value of selected parameter
> Right	Increase the brightness of the Backlight	Increase or adjust value of selected parameter

Status Display Description

STATUS DISPLAY	DESCRIPTION
	a) Main button has been Turned-on. b) Greeting Front Page
	Perform Vacuuming
	Internal Pressure Reach Desired Pressure and Stop Vacuuming
	Internal Pressure is Higher than Desired Pressure and Required to continue vacuuming
	Internal Pressure is Lower than Desired Pressure and Required to Release Some Air through the Vacuum Valve
	Stablizing Internal Pressure for 10 seconds
	Vacuum Analysis in Progress with Count-down Clock
	PASSED in the Vacuum Analyzation Process
	FAILED in the Vacuum Analyzation Process
	a) Vacuum Analysation and Wet Detection System is working OK b) Display Current Water Depth
	Vacuum Analysation is skipped and Wet Detection System is still in working
	Pre-set the Warning Depth
	Wet Sensor has Detected Water Droplets and / or Heavy Moisture inside the Housing
	Current Water Depth has Reached to the Pre-set Warning Depth (Current Depth Blinking)
	The Housing is Severely Leaking or its Vacuum has been Released (VWS ! in Blinking)